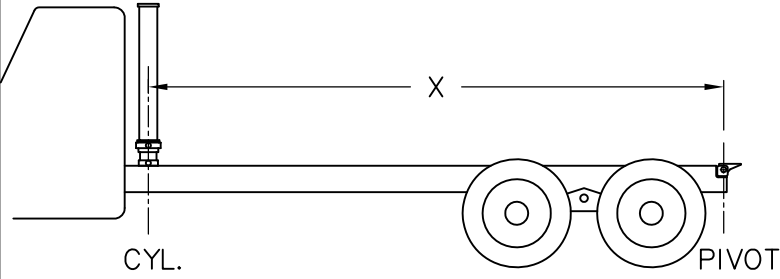


NORDIC[®]

CYL. WEIGHT: 378 LBS
2000 P.S.I.

NTGC 140-5.5-3

TO EXTEND CYLINDER— 32.6 LITERS (8.6 U.S. GAL.)



If "X" = 15'-2" dump angle is 45 deg.
If "X" = 13'-9" dump angle is 50 deg.

NOTE: FOR SERIAL NUMBERS
4-800 TO _____

MODEL NT 140-5.5-3
SEAL KIT

PART No.
41959AR2
X3162R1

