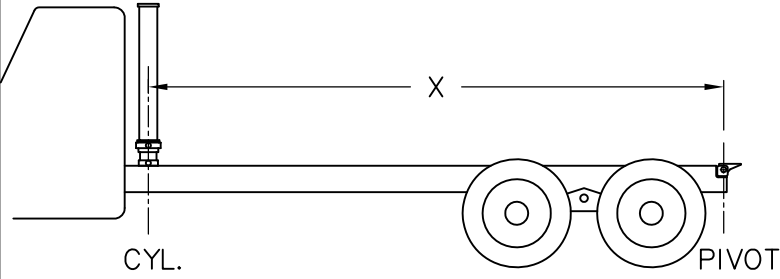


NORDIC[®]

CYL. WEIGHT: 216 LBS.
2000 P.S.I.

NTGC 100-4.5-3

TO EXTEND CYLINDER— 14.0 LITERS (3.7 U.S. GAL.)



If "X" = 10'-10" dump angle is 45 deg.
If "X" = 9'-10" dump angle is 50 deg.

NOTE: FOR SERIAL NUMBERS
___ TO _____

MODEL NTGC 100-4.5-3
SEAL KIT

PART No.
43760A
X3237

