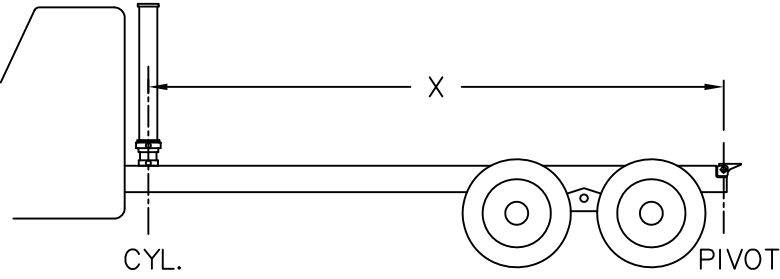




CYL. WEIGHT: 336 LBS  
2000 P.S.I.

# NTC 168-5-4

TO EXTEND CYLINDER— 26.9 LITERS (7.1 U.S. GAL.)



If "X" = 18'-3" dump angle is 45 deg.  
If "X" = 16'-6" dump angle is 50 deg.

## MODEL NT 168-5-4 SEAL KIT

PART No.  
4099A  
X2958

