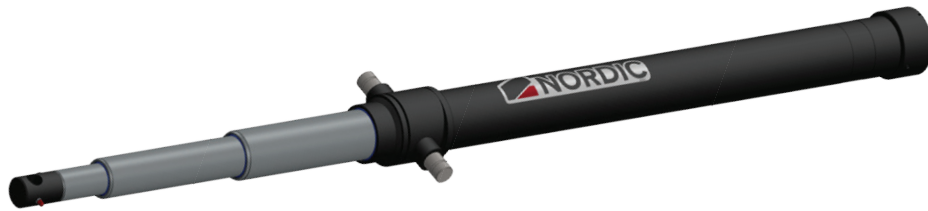


Nordic T-Series Inverted Telescopic Cylinders



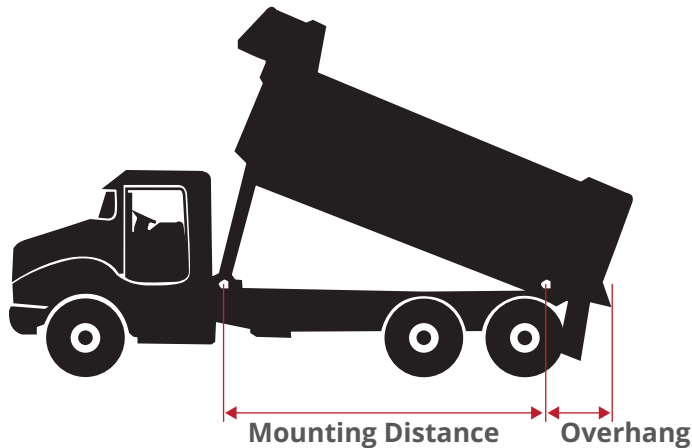
 **NORDIC**

Introducing Nordic T-Series



- 7 or 12 tons of raw lifting capacity for your municipal box or dump trailer design.
- Lifting boxes ranging from 6 ft all the way to 18 ft with 50 degrees tilt.
- Easy integration into dump box designs requiring minimal space while providing several mounting options.
- Facilitates a reduced box floor height and centre of gravity.
- Reduced weight with this power-dense hoist!
- No matter how the box is loaded, this mighty telescopic will lift the payload!
- Excellent lifting capacity and quick return.
- 1-year Manufacturer's Warranty.

Build your own box!



1. Determine the stroke length (in) of the cylinder required for the desired dump angle of your box.

2. Determine the required cylinder capacity (tons) for the desired box and payload requirements.

Stroke Selection Chart		
Cylinder Stroke (in)	Mounting distance (in)	Dump angle (degrees)
60	66	54
	72	49
	78	45
	84	42
78	84	55
	90	51
	96	48
	102	45
90	102	52
	108	49
	114	46
	120	44
108	120	53
	126	51
	132	48
	138	46
120	138	52
	144	49
	150	47
	156	45
144	156	55
	168	51
	174	49
	180	47
	186	46
	192	44

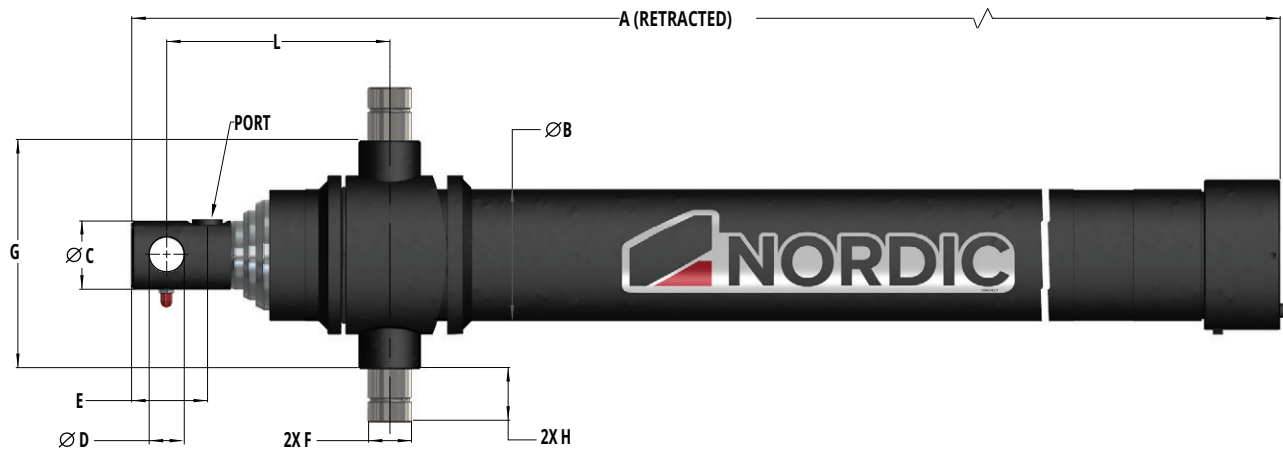
Lift Capacity Chart for 7T Telescopic Cylinder			
Overhang	0 in	12 in	24 in
Mounting distance (in)	Lift capacity (tons)		
72	5.7	8.5	17.0
84	5.7	7.9	13.2
96	5.7	7.6	11.3
108	5.7	7.3	10.2
120	5.7	7.1	9.5
132	5.7	6.9	8.9
144	5.7	6.8	8.5
156	5.7	6.7	8.2
168	5.7	6.6	7.9

Lift Capacity Chart for 12T Telescopic Cylinder			
Overhang	0 in	12 in	24 in
Mounting distance (in)	Lift capacity (tons)		
72	10.4	15.6	31.2
84	10.4	14.6	24.3
96	10.4	13.9	20.8
108	10.4	13.4	18.7
120	10.4	13.0	17.3
132	10.4	12.7	16.4
144	10.4	12.5	15.6
156	10.4	12.3	15.0
168	10.4	12.1	14.6
180	10.4	12.0	14.2
192	10.4	11.9	13.9
216	10.4	11.7	13.4

Lift capacity includes weight of box and its contents.

Nordic T-Series Specifications

3. Select required part number from the specifications chart below.



7 Ton Capacity - 3" Diameter Bore Base Tube - 2000 PSI

Part No.	Model	STROKE (in)	A (in)	B (in)	ØC (in)	ØD (in)	E (in)	F (in)	G (in)	H (in)	L (in)	Port	Weight (lb)	Volume (L)
S2400	T7-60	60	29.6	3.7	2	1	2.2	1.25	6.5	1.25	6.36	1/2" NPT	65.5	2.4
S2401	T7-78	78	35.5	3.7	2	1	2.2	1.25	6.5	1.25	6.36	1/2" NPT	68.0	2.4
S2402	T7-90	90	39.5	3.7	2	1	2.2	1.25	6.5	1.25	6.36	1/2" NPT	75.0	2.7
S2403	T7-108	108	45.5	3.7	2	1	2.2	1.25	6.5	1.25	6.36	1/2" NPT	101.0	3.1

Note: Diameter D is for nominal pin size.

12 Ton Capacity - 3-5/8" Bore Base Diameter Tube - 2300 PSI

Part No.	Model	STROKE (in)	A (in)	B (in)	ØC (in)	ØD (in)	E (in)	F (in)	G (in)	H (in)	L (in)	Port	Weight (lb)	Volume (L)
S2404	T12-78	78	34.8	4.4	2	1	2.2	1.50	7.5	1.43	6.36	1/2" NPT	106.0	3.2
S2405	T12-90	90	38.8	4.4	2	1	2.2	1.50	7.5	1.43	6.36	1/2" NPT	107.0	3.6
S2406	T12-108	108	44.8	4.4	2	1	2.2	1.50	7.5	1.43	6.36	1/2" NPT	132.0	4.2
S2407	T12-120	120	48.8	4.4	2	1	2.2	1.50	7.5	1.43	6.36	1/2" NPT	143.0	4.6
S2408	T12-144	144	56.8	4.4	2	1	2.2	1.50	7.5	1.43	6.36	1/2" NPT	156.0	5.6

Note: Diameter D is for nominal pin size.

4. Select mounting equipment

T-Series Accessories

Part number	Description
S2409	7 & 12-ton T-Series Saddle Weldment
S2410	7-Ton Upper Blocks
S2411	12-Ton Upper Blocks



T-Series Saddle Weldment for 7 and 12-ton cylinders

Seal Kits

Part number	Description
S2412	T7 Seal Kit
S2413	T12 Seal Kit



Upper blocks for 7 & 12-ton cylinders

T-Series inverted telescopic cylinder selection example:

1. Truck box build with a 9 foot box, 50 degrees tilt required, and 24 inches of overhang (OH).
2. Payload capacity of 14 tons required.
3. Mounting distance in inches (MD).

$$\begin{aligned} \text{MD} &= \text{box length} - \text{overhang (OH)} \\ \text{MD} &= 9 \text{ ft} \times 12 \text{ in/ft} - 24 \text{ in (OH)} \\ \text{MD} &= 84 \text{ inches} \end{aligned}$$

1. Using "Stroke Selection Chart", determine the stroke length of your cylinder required.

- Selecting a 60" stroke cylinder achieves 42° of dump angle → not enough ☒
- Selecting a 78" stroke cylinder achieves 55° of dump angle → more than enough ☑

2. Using "Lift Capacity Chart", determine the cylinder capacity required.

- Looking up 7-ton chart for cylinder with 84" mounting distance and 24" overhang achieves 13.2 tons of payload capacity → not enough payload capacity ☒
- Looking up 12-ton chart for cylinder with 84" mounting distance and 24" overhang achieves 24.3 tons of payload capacity → meets requirement of 14 tons ☑

3. Using "T-Series specifications" chart.

- Select **12-ton** and **78" stroke** cylinder model **T12-78**.
Part number **S2404** selected.

4. Select mounting equipment as required.



Nordstrong Ltd.
5 Chester Street
Winnipeg, MB R2L 1W5, Canada
1 (800) 563-1553